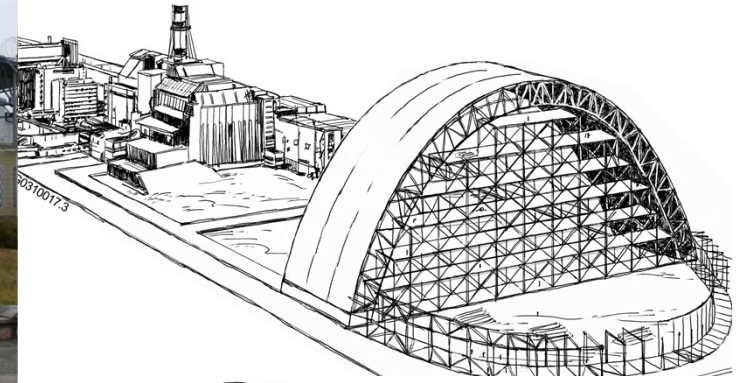
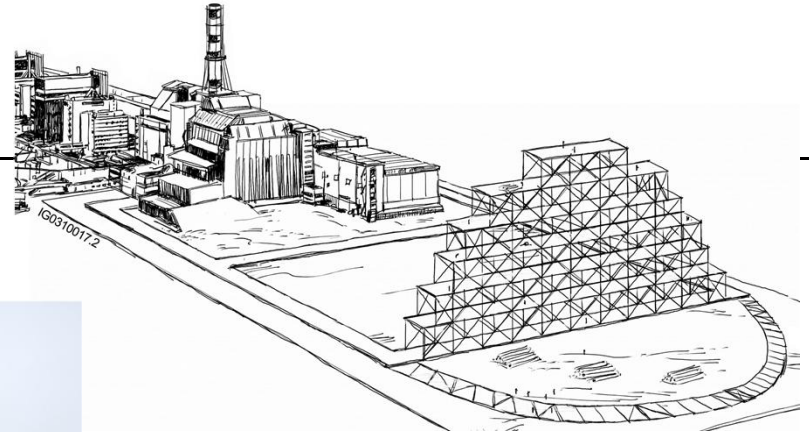
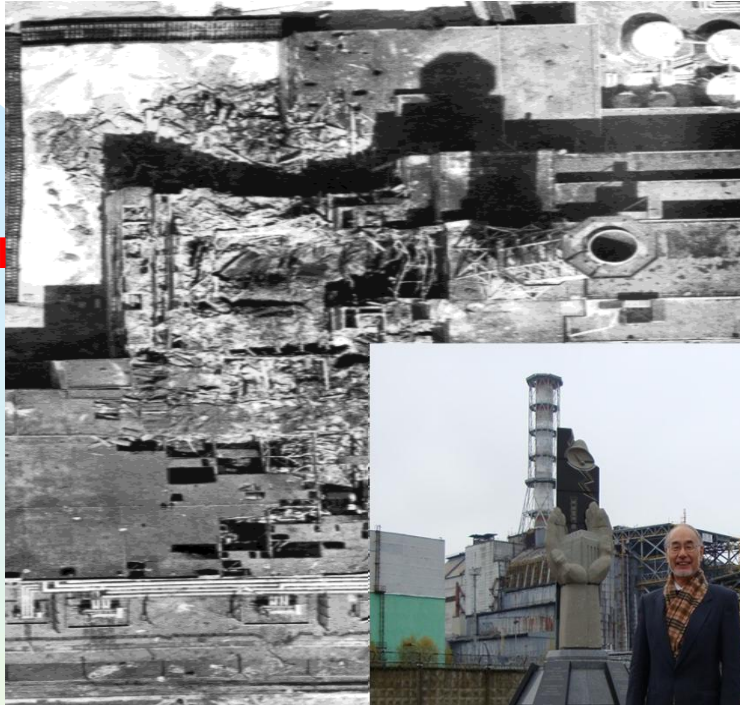
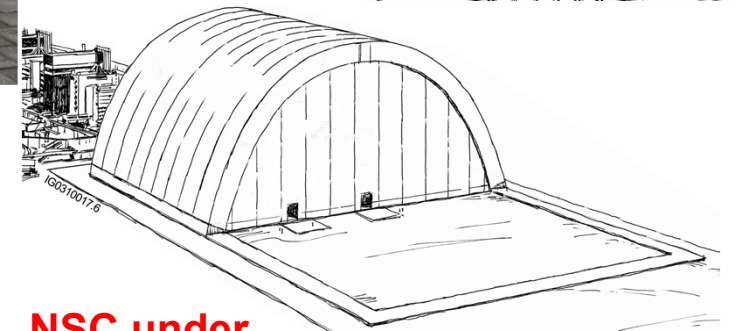


# Chernobyl Nuclear Plant: Yasuo Onishi's 30-year Involvement

Chernobyl  
At the  
Accident



Current

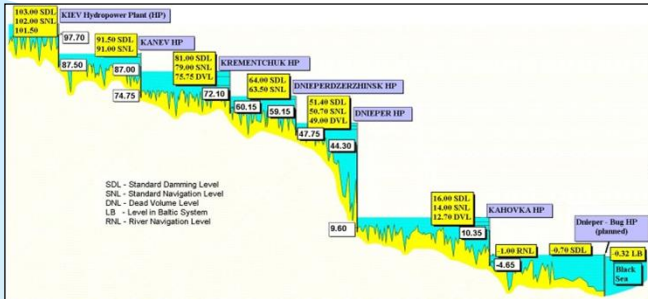


NSC under  
Construction

# Contamination of Dnieper River: Yasuo Onishi's TODAM 1-D Code Prediction

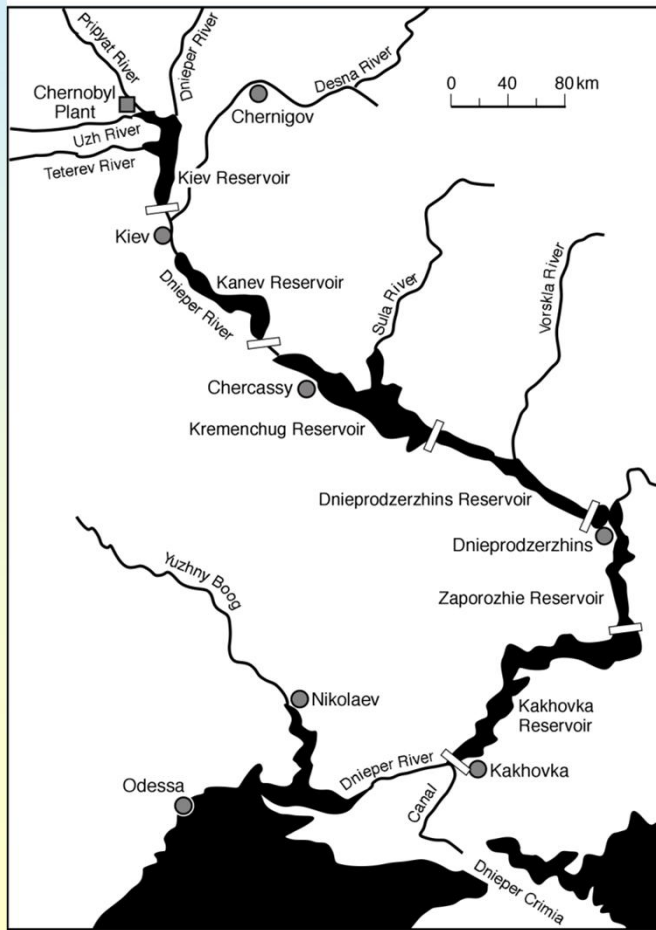
## Validated TODAM

- Floods bring more radionuclides into the river

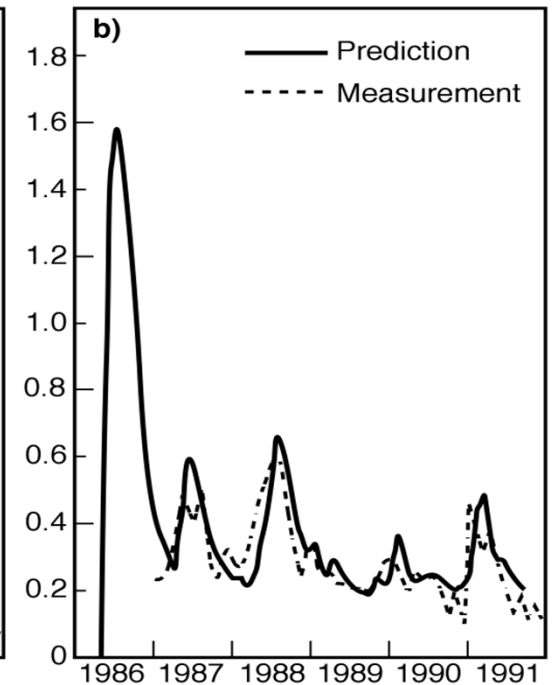
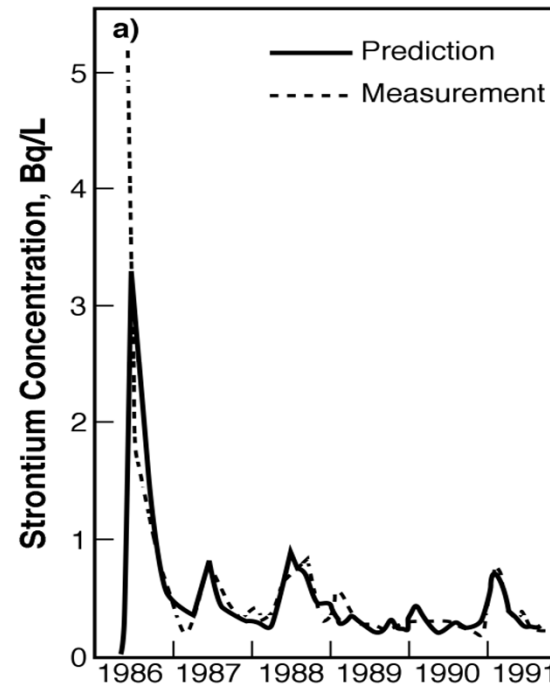


## At Kiev Reservoir

## At Kanev Reservoir



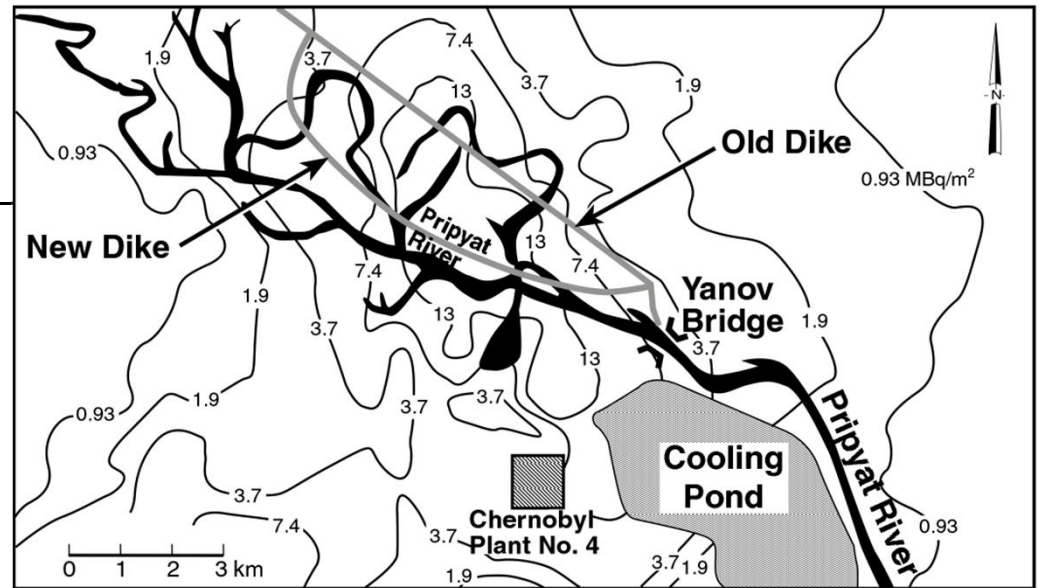
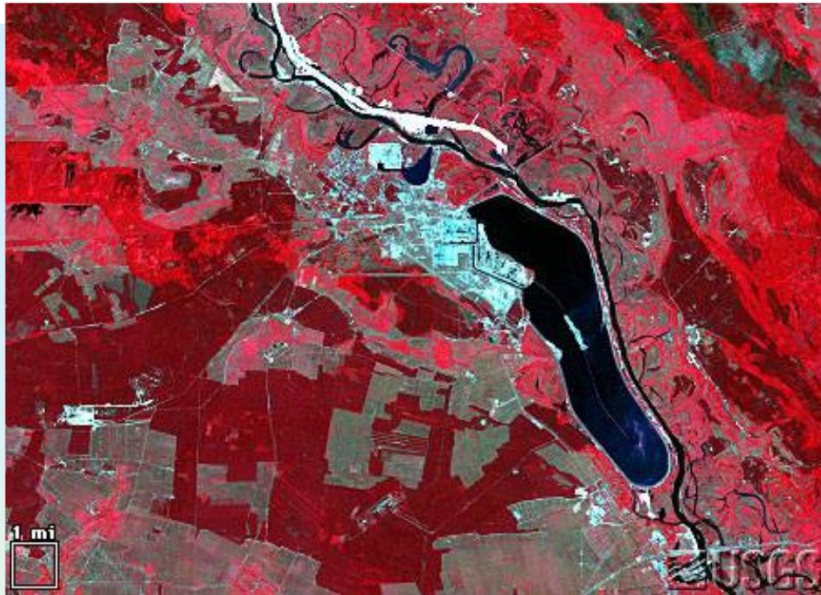
IG0509010.1



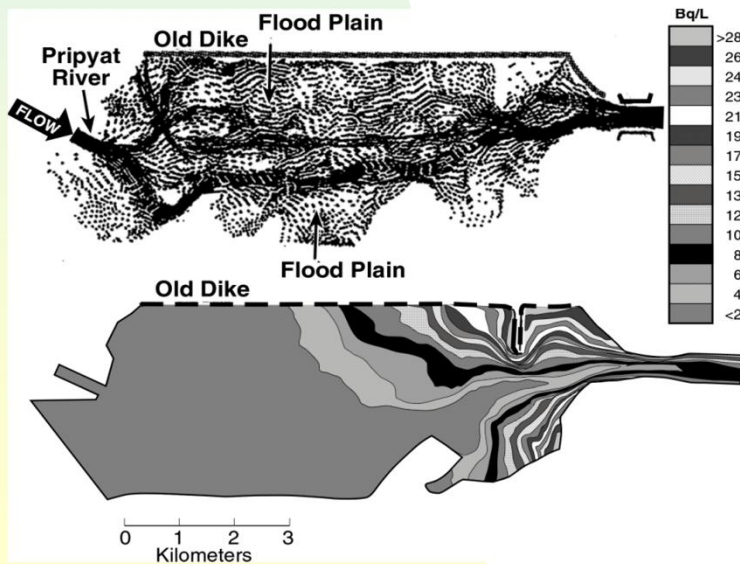
IG0509010.2



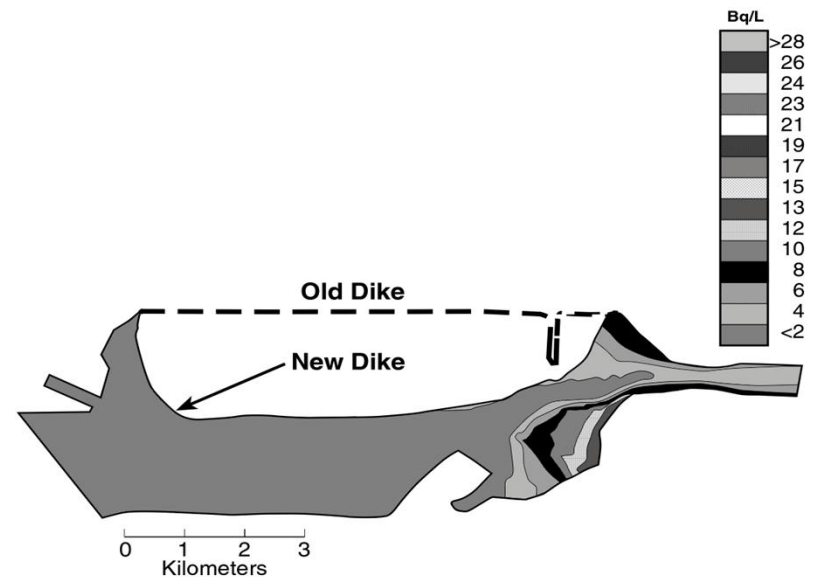
# Effective Remediation: Block off the floodplain: Yasuo Onishi's 2-D FETRA Code prediction



Without the Newer East Bank Dike

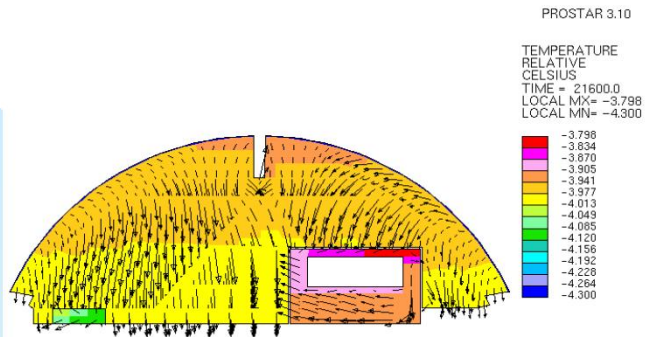


With the Newer East Bank Dike

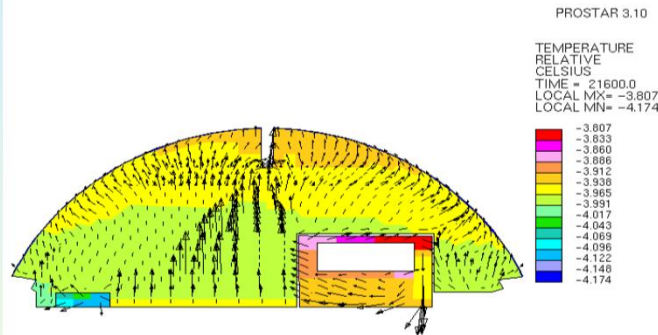


# New Safe Confinement Design Determination: Predicted Air Distribution near NSC West Wall Area

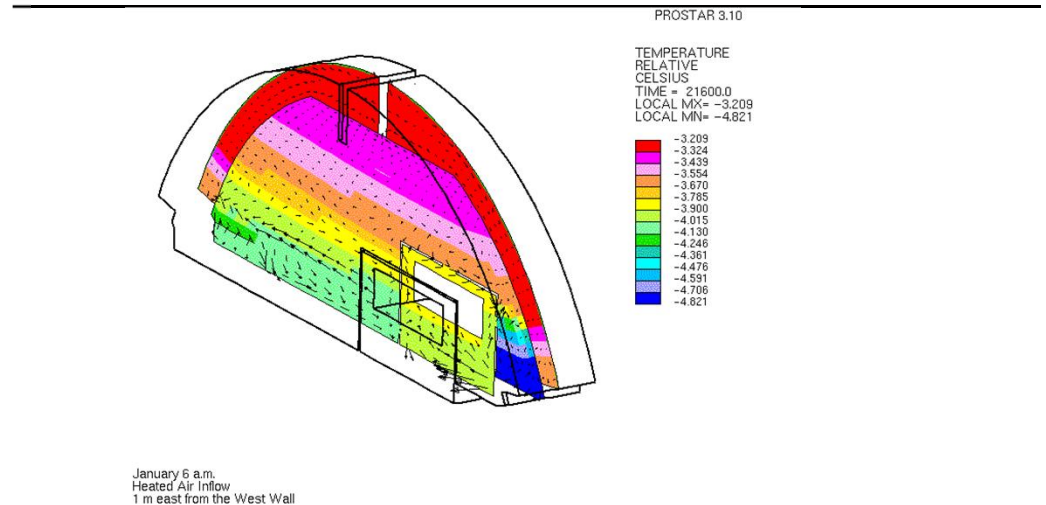
Next  
to  
the  
west  
wall



1 m  
from  
the  
west  
wall



January 6 a.m.  
Heated Air Inflow  
1 m east from the West Wall



Inside the Inner Skin

Model-based decisions, including

- Number of roof layers
- Annular space and west wall area configuration
- Ventilation type, rate and locations
- Insulation need

[http://nuclearstreet.com/nuclear\\_power\\_industry\\_news/b/nuclear\\_power\\_news/archive/2014/01/15/video-documents-raising-of-new-confinement-structure-at-chno0yl-01\\_150?.aspx](http://nuclearstreet.com/nuclear_power_industry_news/b/nuclear_power_news/archive/2014/01/15/video-documents-raising-of-new-confinement-structure-at-chno0yl-01_150?.aspx)

<https://www.youtube.com/watch?v=r4k30LJSr8o>